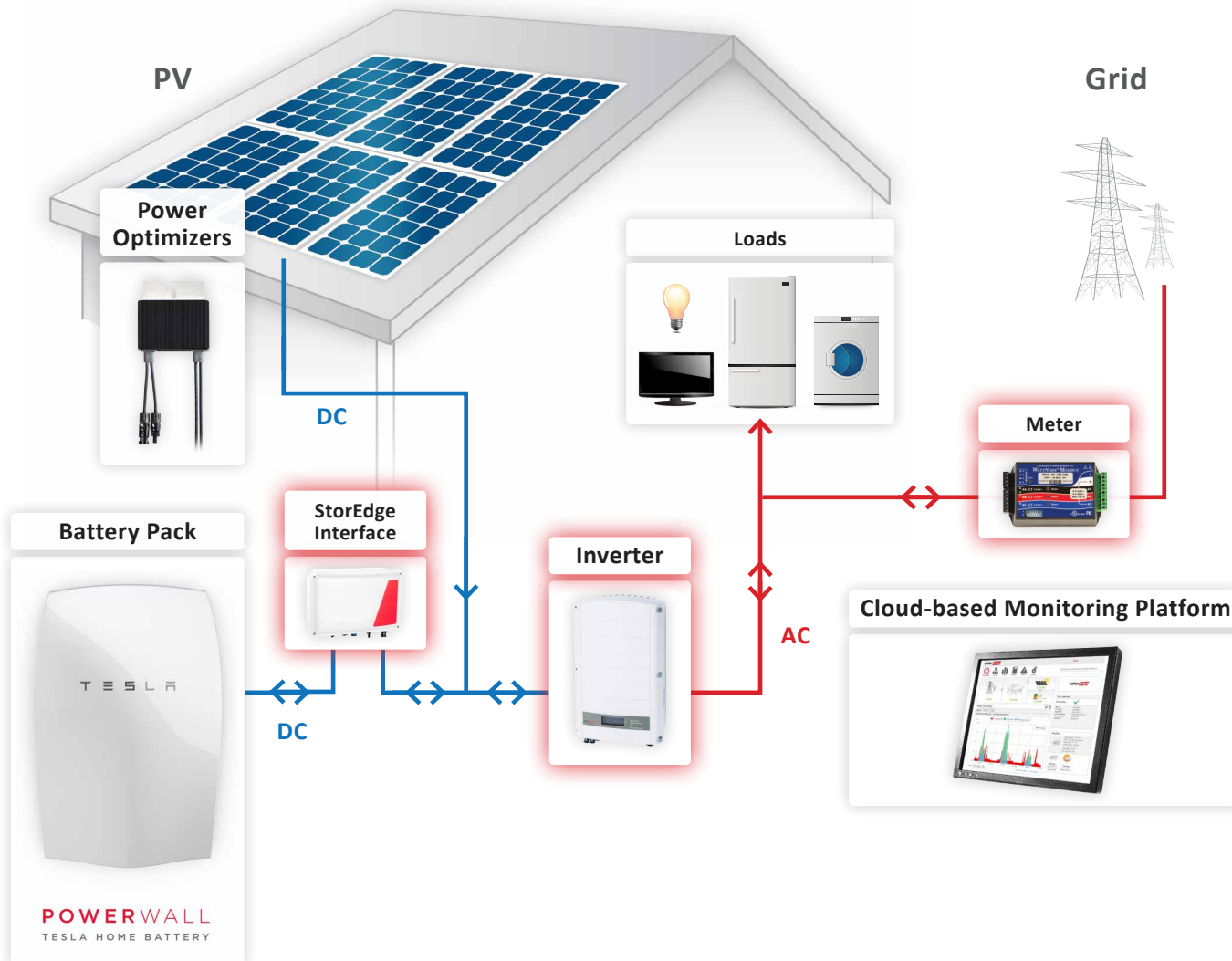


# StorEdge™: Optimizing Self-Consumption



SolarEdge's StorEdge™ DC coupled storage solution allows home owners to maximize self-consumption and to enable energy independence. Unused PV power is stored in a battery and used when needed to maximize self consumption. The solution is based on a single inverter for both PV and storage. Existing SolarEdge systems can be upgraded to the StorEdge™ solution.



- 1 More Energy**
  - DC coupled solution allows high system efficiency
  - PV power is stored directly in the battery
  - No additional conversions from AC to DC and back to AC
  - Module-level power optimization for more power harvesting
- 2 Simple Design & Installation**
  - A single inverter for both PV and on-grid storage
  - Outdoor installation allows flexibility in battery location
  - No special wires are required → utilize the same PV cables
  - No high voltage & current during installation and maintenance
- 3 Enhanced Safety**
  - PV array and battery voltage designed to reduce to safe voltage upon AC shut down
  - Compliance with VDE 2100-712
- 4 Full Visibility**
  - Monitor the battery status, PV production, and self-consumption data
  - Smarter energy consumption to reduce electricity bill
- 5 Easy Maintenance**
  - Remote access to inverter/battery software
  - Easy access to the inverter during maintenance (outdoor installation)

The SolarEdge StorEdge™ solution is based on the SolarEdge inverter and the SolarEdge Meter. It is compatible with the Tesla Powerwall Home Battery via the StorEdge Interface.



## SolarEdge Inverter

The SolarEdge inverter manages battery and system energy, in addition to its traditional functionality as a DC-optimized PV inverter



## SolarEdge Meter

For battery integration and for production / consumption readings for Feed-in Limitation



## StorEdge™ Interface

Simple installation and connectivity

Existing systems can be upgraded

Designed to eliminate DC voltage and current during installation, maintenance, or firefighting

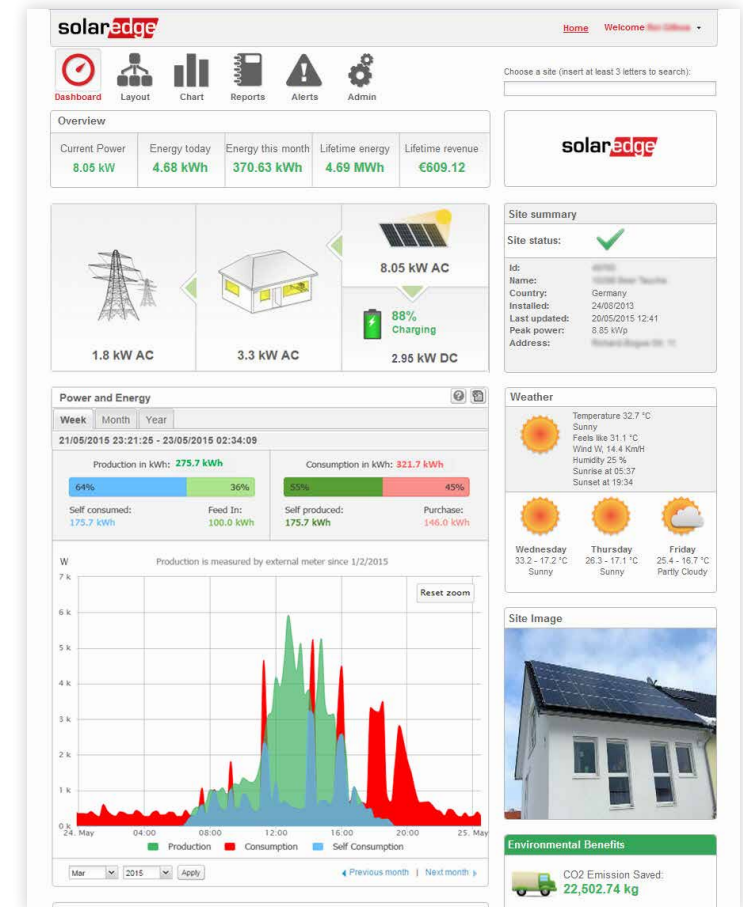


POWERWALL  
TESLA HOME BATTERY

## Tesla Powerwall Home Battery

7kWh, ideal for maximizing self-consumption

High-voltage, high-efficiency DC coupled battery



Dashboard from the SolarEdge cloud-based monitoring platform