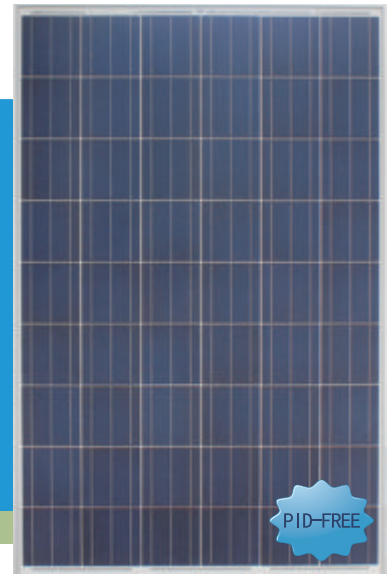


LIGHTWAY SOLAR MODULE

LW6P54 Series KEY FEATURES



15.88%
Max Efficiency

235W
Max Peak Power

10 YEAR
Product Warranty

25 YEAR
Linear Power Warranty



0-5W Positive Tolerance 0-5W
Provides our customers with maximum power output



Electric Current Classification
System output maximized by reducing mismatch losses up to 2% with modules sorted and package by amperage



Excellent weak light performance
Relative change of module efficiency at 200W/m² is less than 4%



Upto 5400Pa Mechanical load
Module certified to withstand extreme wind and snow loads



Passed Ammonia Gas and Salt Mist Corrosion Resistance Test
Tested and approved by TUV Rheinland according IEC 62716 Draft C and FprEN 61701 Ed.2

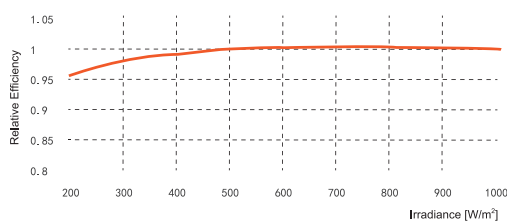


ISO 9001:2008 - ISO 14001:2004 - OHSAS 18001:2007

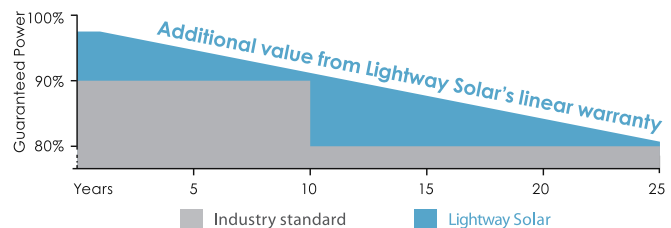


PID-Free
Module without potential induced degradation even under high temperature and high relative humidity condition.

PERFORMANCE AT LOW IRRADIANCE



The typical relative change in module efficiency at an irradiance of 200W/m² in relation to 1000W/m² (both at 25°C and AM 1.5 spectrum) is less than 4%.



LINEAR WARRANTY

- 10-year warranty on materials and workmanship
- 25-year warranty > 80% power output
- 3% degradation rate the first year
- 0.70% yearly linear degradation

ELECTRICAL DATA @ STC

Module Type		LW6P54-235	LW6P54-230	LW6P54-225	LW6P54-220	LW6P54-215	LW6P54-210
Peak Power_Pmax	W	235	230	225	220	215	210
Power tolerance_ΔPmax	W	0,+5					
Voltage at Pmax_Vmpp	V	27.48	27.25	27.03	26.88	26.63	26.54
Current at Pmax_Imp	A	8.56	8.45	8.33	8.19	8.08	7.92
Open Circuit Voltage_Voc	V	34.10	33.92	33.81	33.68	33.52	33.35
Short Circuit Current_Isc	A	9.17	9.02	8.84	8.76	8.74	8.57
Module Efficiency_η		15.88%	15.54%	15.20%	14.86%	14.53%	14.19%

Values at standard test condition STC: air mass AM 1.5, irradiance 1000W/m², cells temperature 25 °C

ELECTRICAL DATA @ NOCT

Module Type		LW6P54-235	LW6P54-230	LW6P54-225	LW6P54-220	LW6P54-215	LW6P54-210
Peak Power_Pmax	W	172	169	165	161	157	153
Voltage at Pmax_Vmpp	V	25.38	25.23	25.19	24.85	24.46	24.34
Current at Pmax_Imp	A	6.79	6.68	6.55	6.48	6.43	6.30
Open Circuit Voltage_Voc	V	31.52	31.33	31.21	31.07	30.90	30.72
Short Circuit Current_Isc	A	7.44	7.32	7.17	7.11	7.09	6.95

Nominal operating cell temperature NOCT: irradiance 800W/m², ambient temperature 20 °C, wind speed 1m/s

TEMPERATURE RATING

Nominal operating cell temperature(NOCT)	°C	45±2
Temperature Coefficient of Pmax	%/°C	-0.4204
Temperature Coefficient of Isc	%/°C	0.0654
Temperature Coefficient of Voc	%/°C	-0.3215

MAXIMUM RATING

Max. System Voltage	1000Vdc
Operating Temperature	-40 ~ +85 °C
Max. Series Fuse Rating	15A
Max. Reverse Current	15A
Max. Mechanical load	5400Pa

CONSTRUCTION MATERIALS

Solar cells	54-multicrystalline silicon cells, 156mm*156mm
Glass	3.2mm low-iron tempered glass
Encapsulant	ethylene vinyl acetate(EVA)
Frame	anodized aluminium alloy(Silver)
Junction Box	≥1P65 rated, 3/6 diodes
Cable	4mm ² PV cable, 900mm
Connector	MC4 compatible

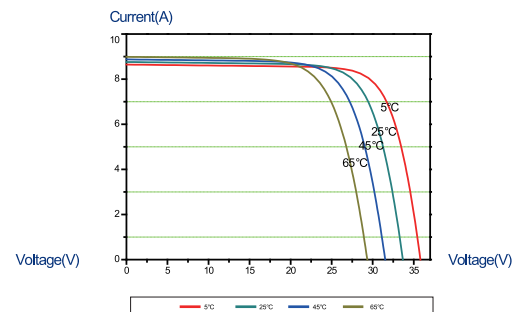
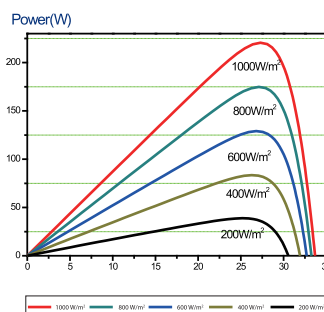
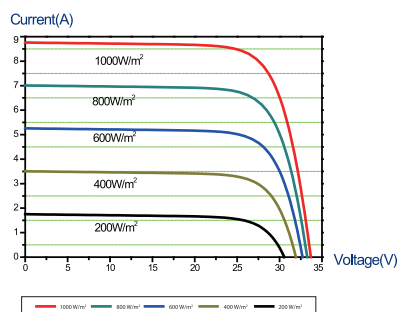
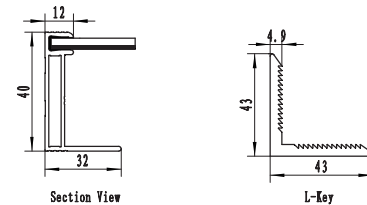
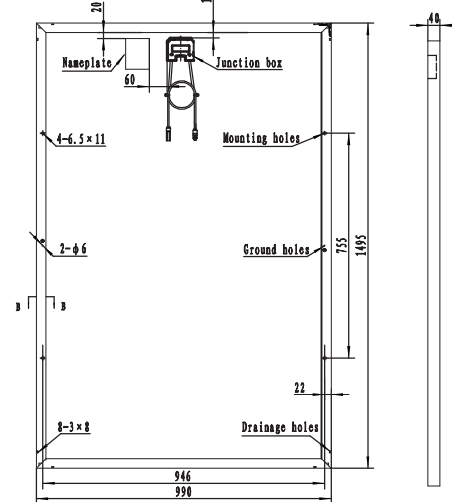
GENERAL DATA

Module Dimension(L×W×H)	1495×990×40mm
Weight	16.8kg

PACKING

Modules per pallet	26
Pallets per 40' container	28
Packing box dimension(L×W×H)	1545×1150×1040mm

Unit:mm



MKT-20150316